

velocity

THE PERIODIC NEWSLETTER OF THE HOLYOAKE GROUP



**HOLYOAKE FIRE DAMPERS
MEET AS1530.4 2005
FUTURE PROOF YOUR
BUILDING NOW!**

RMIT SAB - VIBRANT & ENGAGING

ARBS - 2014 STANDS 102 | 103 | 134

OUR NEW COMPONENT MANUAL - OUT NOW!



HOLYOAKE
AIR MANAGEMENT SOLUTIONS™



**BIM Holyoake is putting
the pieces together**



Future-proof your building

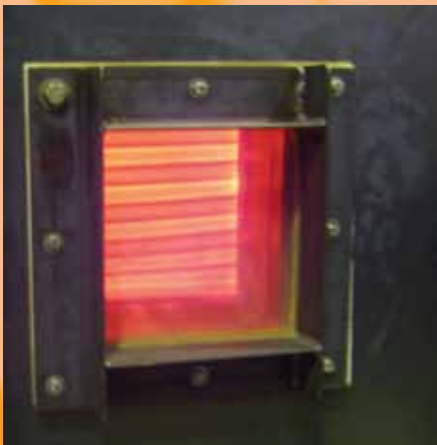
Holyoake IBD-FS

Fire Seal Fire Damper

In today's safety conscious world fire protection is a key element in building safety and the protection of occupants. Holyoake Industries have always been at the forefront in the design and safety of fire and smoke protection products for mechanical services applications. We are proud to release our latest product design which provides best practice protection for property, and aides in the safe evacuation of occupants – The IBD-FS "Fire Seal" Fire and Leakage rated series of fire dampers.

The IBD-FS Fire Seal damper has been tested in accordance with the current test standard AS1530.4 -2005. This fire protection damper comfortably passed both the 4 hour construction integrity, and air leakage rates, as documented in section 11.6.2.1 which are based on the European ISO standard 10294-1 'E' Classification.

Standards Australia have confirmed AS1530.4-2005 as the current testing standard. All new fire protection products must now adhere to the 2005 standard revision. This standard is now also referred to in the Building Code of Australia.



The release of AS 1530.4 2005 provided a real challenge to Holyoake and the industry as it requires all fire dampers to reach an air leakage rate some 50% lower than previous standards. Fire dampers tested to the 2005 revision must provide fire integrity whilst maintaining an air leakage rate of just $360\text{m}^3/(\text{h}/\text{m}^2)$ at 300pa. This is not easy to do!

The fact is, smoke kills more people than the fire itself. The Holyoake IBD-FS provides the means for fire containment and effective occupant evacuation.

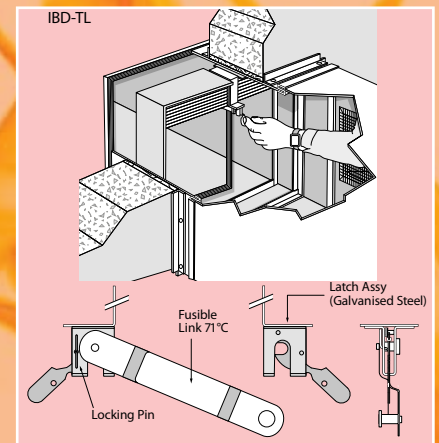
Holyoake Industries are currently the only Australasian manufacturer in the market with mechanical fire dampers tested and compliant with the current test standard AS1530.4 2005. All property developers, architects, consulting engineers and contractors can now provide a level of fire security that meets the requirements of the current test standard with the Holyoake IBD-FS series Fire Seal dampers. Best practice adoption should be policy for all new building construction.

Fire Service protection engineers are faced with the many options available in today's market. What is well understood is that the speed at which a fire damper operates in an emergency together with its reliability are the two most important factors for the success of the fire protection system. One of the huge benefits of the IBD-FS Fire Seal damper is that it reacts in seconds, has fire test proven integrity and provides the best leakage performance for a curtain type damper in the Australasian market today.

The often overlooked issue is fire damper maintenance. Holyoake IBD-FS dampers are provided with a "Safe Test" test latch system as standard.

The benefit of this system is that in many cases the fire damper can easily be reset after test using one hand, making annual drop test maintenance easier with savings in time and resources.

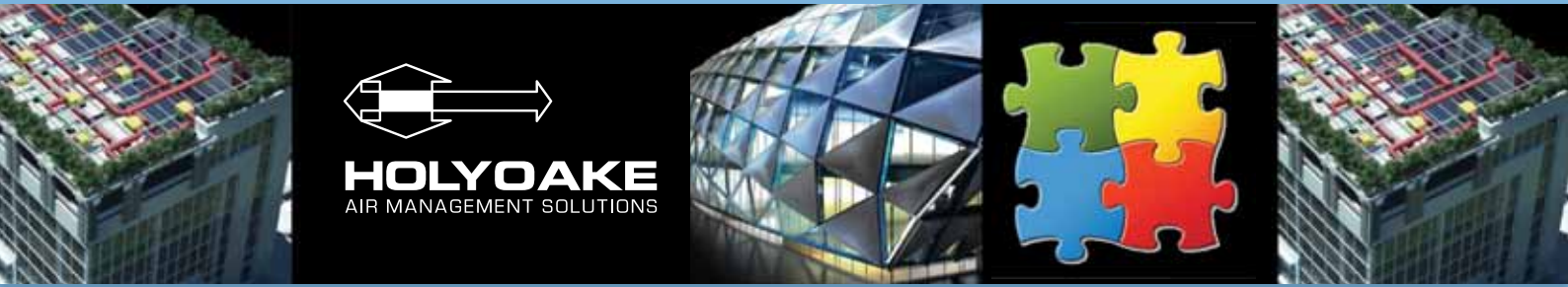
As with all Holyoake products we have purpose built manufacturing processes so we can guarantee the highest build quality and ensure every fire damper is consistent with the damper that was originally tested.



Having recently celebrated our 60th year in business the IBD-FS is a true testament to a company that is committed to providing best practice in mechanical fire management.

Fire protection is a critical component to any building and awareness of what is available and how it can be best applied is the key to providing building safety. To facilitate this Holyoake are offering free fire damper awareness seminars for the industry. Many of these seminars have already been conducted with mechanical design engineers and contractors across Australia and New Zealand. The feedback has been tremendous with all participants attending having discovered something of value.

For further seminar information email your local Holyoake Branch now to book a seminar.



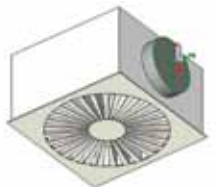
BIM Building Information Modelling

Holyoake is putting the pieces together

If you haven't yet heard about BIM, Building Information Modeling you are about to.

BIM is a quantum shift from 2D or 3D documentation. It is 3D documentation that includes rich content data that significantly alters the design, build, delivery and life cycle processes of the project.

At Holyoake we commenced our preparation for the BIM landscape more than 4 years ago and have now



CFP Swirl diffuser with plenum intelligent Model

compiled a significant and ever growing library of intelligent, content rich, product models.

As a recognised industry leader in this field, Holyoake was asked to join the BIM-MEP^{AUS} initiative, which has as it's core objective to deliver the effective implementation of building information modeling (BIM) throughout the construction industry.

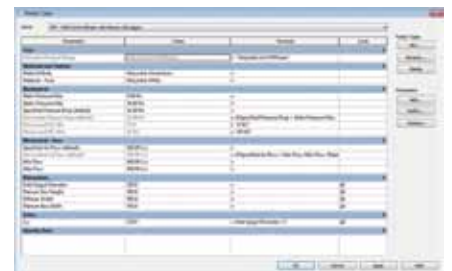
BIM-MEP^{AUS} believes taking a collective approach will reduce implementation costs, establish effective work flows and allow all concerned to harvest the total potential of the BIM environment with a more effective uptake rate.

Holyoake recently participated in the BIM-MEP^{AUS} Information modeling (BIM) Industry Forum, the 3rd since 2010, held at the Melbourne Convention & Exhibition Centre.

What was obvious to all concerned is that the BIM built environment is here, well established and will be adopted industry wide sooner rather than later.

It was clearly articulated by each of this year presenters that BIM adoption will deliver efficiencies, by facilitating pre-fabrication, allowing greater levels of co-ordinations and on site setout like never before. BIM offers a seamless procurement stream, a reality not in the too distant future with effective savings in resources that cannot be ignored.

The forum proved to be an outstanding opportunity for the industry to understand the significance of a BIM Environment, understand it's potential, see first hand implementation examples, and to contribute to the development of the Australian BIM MEP^{AUS} standard.



BIM-MEP^{AUS}
BIM-MEP^{AUS} MODELS
BIM-MEP^{AUS} WORKFLOWS

BIM design and construct with Facilities Management (FM) handover is likely to be a Government works policy and it is now time start putting your BIM pieces together.

The BIM-MEP Aus committee have now set themselves an ambitious target of establishing and implementing the standards before the next Forum in 2014.

Holyoake for our part are committed to the establishment of certified model standards to ensure the quality level is maintained in both the architectural presentation and most importantly the engineering data. A clear understanding of effective model design and our consideration of the workflow process has greatly enhanced the Holyoake product content library.

The Holyoake BIM product library is available to all, and purpose built for use with Autodesk REVIT. The models can be obtained by contacting your nearest Holyoake office across Australia & New Zealand directly or through the Holyoake website - www.holyoake.com or www.bimmepaus.com.au

We would encourage your participation and feedback in the further development of BIM-MEP^{AUS}.

RMIT SAB Swanston Academic Building



RMIT is a global university of technology and design, and the new Swanston Academic Building showcases RMIT's \$600 million investment in cutting-edge educational facilities.

The Swanston Academic Building acts as a catalyst to accelerate the cross-pollination of new ideas. There are many shared learning spaces fitted out with the latest technology, from a high-speed wireless network to LCD screens that can be accessed by multiple users. This new building is also committed to sustainability, with reduced energy and water use, and has been accredited with a 5-star green building rating. It is RMIT's vision for tomorrow that you can see today.

A new era in learning, teaching and research. The world of learning and research as we know it will see significant change over the next two decades. In a world of ubiquitous technology every space is a learning place within the university and the city at large. Students, armed with mobile devices in a completely wireless environment, will colonise the space in new ways.

Swanston Academic Building anticipates future practices and will accelerate the uptake of new ideas and the adoption of new approaches to the learning, teaching and research experience. The experience of the new building is one of being connected to people and activity through the use of space and volume. The activity of learning is highly visible and on display, rather than closed, private and hidden. The spaces encourage the creative and intellectual transfer of knowledge and leads users to interact in multiple settings with multiple information sources.

Above all, the new building designed by Lyon Architects is vibrant, engaging and all about connecting people. Holyoake along with Brookfield Multiplex and A.G. Coombs are proud to be associated with this unique and dynamic building.

Melbourne's New York Glamour – Tiffany Collins St

For decades pale blue boxes with white ribbon from Tiffany & Co have symbolised love, an emotion the jeweller is hoping to evoke with its revitalised flagship store in Melbourne.



After three years of planning, the Collins Street store has more than doubled in size to 1250sqm across three levels and features an on-site service centre, only the company's second. The first is in the New York store where Audrey Hepburn famously enjoyed breakfast.

Tiffany & Co Australia have taken retail in this country to a new level. Glen Schlehber, Store managing Director says "In this difficult economic environment you have to make people want to shop by offering something extra special. We've done that with a building that combines a hefty dose of New York glamour with Melbourne's unique architectural style".

Highlighting the enlarged space in the former Bank of Melbourne building is a sweeping staircase and a chandelier by local artist Dean Smith with all front of house air diffusion equipment hidden behind a linear fascia. The Holyoake Flowline Linear product has been utilised in both the Melbourne City and Chadstone Tiffany stores. The Flowline product integrates seamlessly into the ceiling system leaving nothing but a visual linear void.

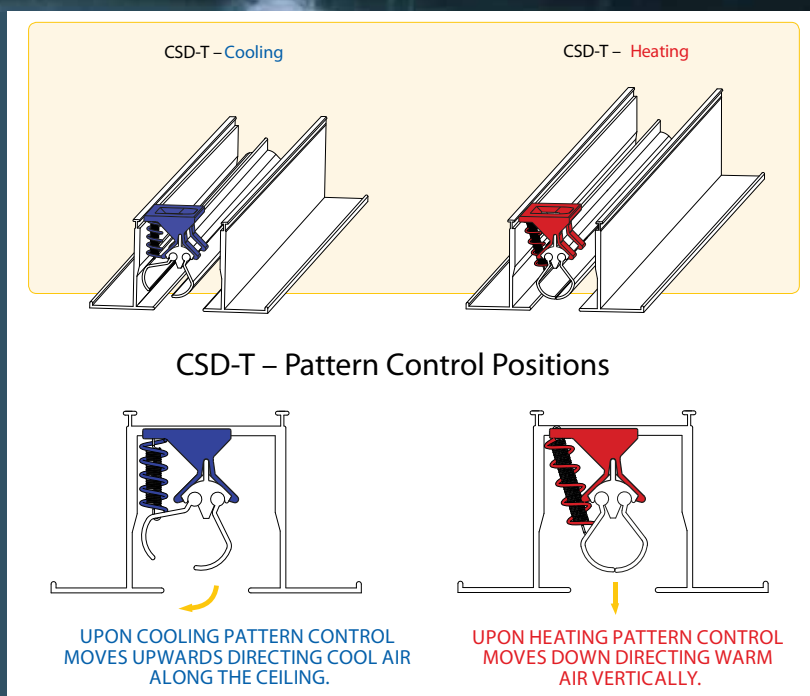
Tiffany Melbourne customers can now get the same products that they get overseas in a perfect environmental climate designed by Umow Lai and implemented by D & E Air Conditioning.

On exhibition at Tiffany Melbourne are many priceless jewels and stones including a \$109,500 Bird on a Rock emerald brooch by Jean Schlumberger. Melbourne people should come in just to admire the beautiful store.

Hot & Cold

Thermal Linear CSD-T

Just one of the many new product developments in the new Holyoake component manual is the thermally re-active CSD-T. This new product allows linear slot diffusers to be used in those higher ceiling applications where mixing alone will not be effective to produce winter comfort conditions.



The CSD-T builds further on the Holyoake Thermal range of Ceiling Diffusers, Circular Diffusers, Jets, Swirl and Nozzles all which use thermal energy to enact air pattern change. This could be direction or angle of diffusion or diffuser blade settings.

These products provide effective air diffusion solutions for both heating and cooling, use no power, are energy efficient and are environmentally friendly. They have no wiring or controls and offer no ongoing maintenance concerns.

The CSD-T Thermal actuator may in some cases be retrospectively fitted to existing Holyoake Linear Slot Diffusers CSD.

The CSD-T thermal actuator adjusts the air pattern from Cooling - Horizontal to Vertical - Heating and back again in response to the supply air temperature using memory metal actuator technology design by Holyoake engineers.

For further information refer to the new Holyoake component manual.
Or use our website
www.holyoake.com - Product Search CSD-T

arbs2014

You're invited..

Mark your diaries now for the 2014 Air Conditioning, Refrigeration and Building Services (ARBS 2014) exhibition and seminar program, which will be held from

20-22 May 2014
Melbourne Convention
& Exhibition Centre

Professionals and trade visitors who are involved in the design and construction of sustainable, energy efficient commercial, residential and multi-purpose buildings and the design, manufacture, installation and maintenance of heating, ventilation, air conditioning (HVAC) and refrigeration products and services worldwide are invited to attend.

The 2014 event offers a focus on innovation and emerging trends in the built environment, demonstrating how the different disciplines within our industry are collaborating to achieve excellence in sustainable buildings. Holyoake's participation once again will include on stand hospitality, presentations and demonstrations of our new products and include seminars on the new Fire Damper IBD-FS and BIM (Building Information Modeling) with professionals on hand to discuss these new technologies.

All visitors have the opportunity to view not only the latest from Holyoake but manufacturers across the industry on the exhibition floor. Come in and talk to manufacturers and distributors about new innovations, network with your peers at a variety of social functions including the awards presentation dinner.

Locate the Holyoake at stand
102/103/134





HOLYOAKE'S COMPONENT MANUAL

The first edition of this manual in 1985, quickly found a place on the desks of designers, contractors and other decision makers in the industry. This, our fifth issue, will, we hope, continue as a useful reference. The concept of a single reference for all system elements beyond the main plant has been retained in this new issue, which includes a significant number of additional products and changes to some traditional ones.

Our commitment to the H.V.A.C. industry, combined with an innovative approach to design and laboratory testing has gained the respect of architects, engineers, builders and contractors both in Australia and New Zealand. Accordingly, the Company is now the largest manufacturer of air distribution equipment in the Asia Pacific region, offering the most comprehensive and diverse range of air diffusion equipment available.

Through Holyoake's emphasis on quality, its core H.V.A.C. activity has achieved "preferred supplier" status for the air management solutions sector in both Australia and New Zealand. Each Holyoake facility employs very experienced product development and manufacturing people together with accredited air conditioning engineers, to ensure customers and clients receive sound and reliable advice on how best to use the vast range of Holyoake products. The laboratory research and testing facility incorporated into each Holyoake plant enables the company to produce the most effective air management solutions for difficult and sensitive industry projects. The groups' approach to excellence in design and client service has been rewarded by continuous ISO accreditation since 1993.

Application engineering advice and information presented in Section A of this handbook has been based on the A.S.H.R.A.E. publications and other recognised sources. It is intended for use by persons who have adequate technical training in the field of air distribution and H.V.A.C. engineering. This information and advice is presented as an aid only and should be verified before it is put to any use. The user should also establish the applicability of such information or advice in relation to any specific circumstances.

We gratefully acknowledge the consistent support we have enjoyed and continue to enjoy from our many clients, through the last 60 years.

NOEL HOLYOAKE
Chairman



HEAD OFFICE - NEW ZEALAND
Auckland Office & Factory
67-69 Greenmount Drive, East Tamaki
Auckland 2013 New Zealand

PO Box 58-479 Botany
Manukau 2163 Auckland NZ
Tel +64 9 274 4144
Fax +64 9 274 4288
Email auckland@holyoake.com

Wellington Office & Factory
89 Main Road, Tawa
Wellington 5028 New Zealand

PO Box 51-038 Tawa
Wellington 5249 New Zealand
Tel +64 4 232 2722
Fax +64 4 232 2822
Email wellington@holyoake.com

Christchurch Office & Factory
27 Waller Terrace, Addington
Christchurch 8011 New Zealand

PO BOX 632 Christchurch Mail Centre
Christchurch 8140 New Zealand
Tel +64 3 366 6545
Fax +64 3 366 6665
Email christchurch@holyoake.com

AUSTRALIA
Melbourne Office & Factory
95 Redwood Drive, Dingley
Victoria 3172 Australia

PO Box 195, Braeside
Victoria 3195 Australia
Tel +61 3 9551 5022
Fax +61 3 9551 8414
Email melbourne@holyoake.com

Sydney Office & Warehouse
Factory 2/3 St James Place, Seven Hills
NSW 2147 Australia

Tel +61 2 9676 3800
Fax +61 2 9676 3911
Email sydney@holyoake.com

Brisbane Office & Factory
5 Program Street, Yatala
Queensland 4207 Australia

PO Box 6061 Yatala
Queensland 4207 Australia
Tel +61 7 3807 7111
Fax +61 7 3807 7800
Email brisbane@holyoake.com

Adelaide Office & Factory
86 Hardys Road, Torrensvile
Adelaide SA 5031 Australia
Tel +61 8 8354 1580
Fax +61 8 8354 1586
Email adelaide@holyoake.com

Perth Office
Level 28 AMP Tower
140 St Georges Terrace
Perth WA 6000 Australia
Tel +61 8 8354 1580
Fax +61 8 8354 1586
Email perth@holyoake.com

